



GMT MONTHLY MEMBERSHIP PROGRESS REPORT

Results as of: 5/31/2020

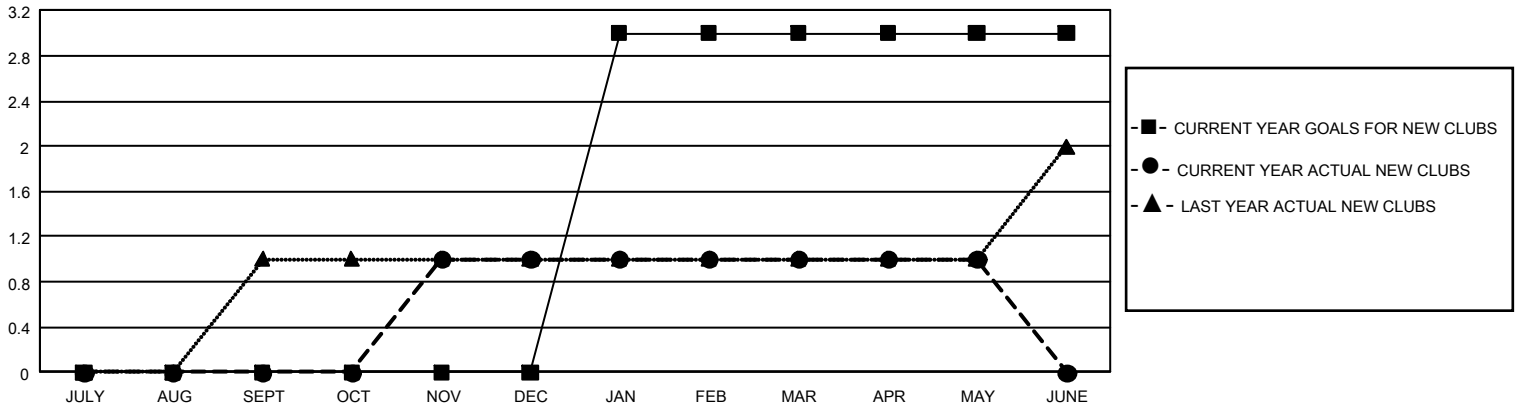
GMT Constitutional Area 2, Group A

GMT: OPEN

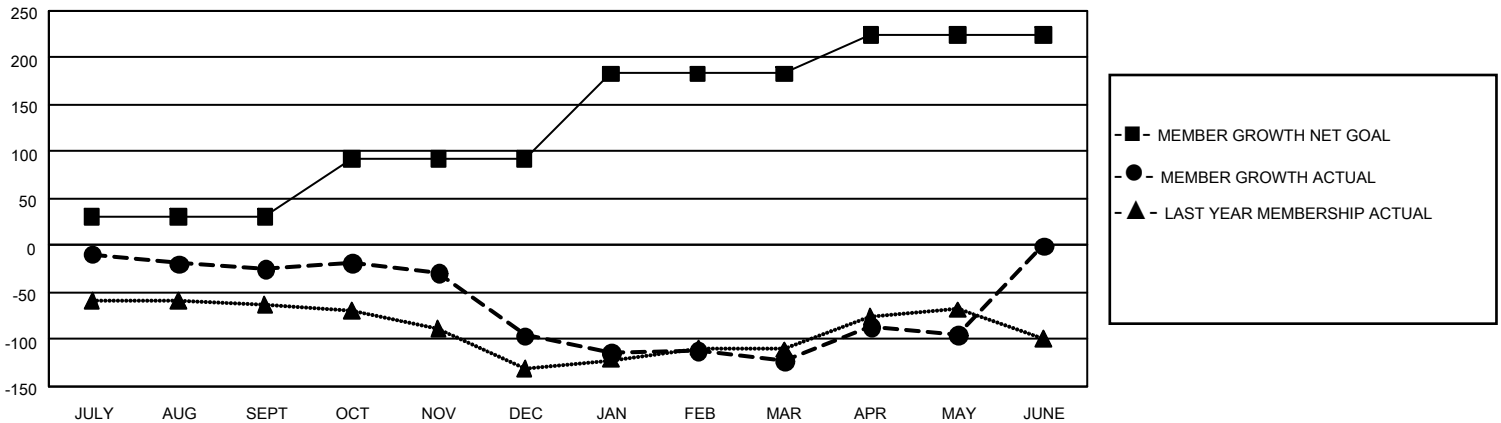
REPORT DOES NOT INCLUDE CLUBS IN UNDISTRICTED AREAS.

Clubs				Members			
RESULTS FOR 2019-2020				RESULTS FOR 2019-2020			
QUARTER	NEW CLUB GOAL	NEW CLUBS	DROPPED CLUBS	QUARTER	MEMBER GROWTH NET GOAL	MEMBER GROWTH ACTUAL	DROPPED MEMBERS ACTUAL (including transfers)
JULY/AUG/SEPT	0	0	0	JULY/AUG/SEPT	93	101	102
OCT/NOV/DEC	0	1	8	OCT/NOV/DEC	183	89	155
JAN/FEB/MAR	9	0	0	JAN/FEB/MAR	273	83	102
APR/MAY/JUNE	0	0	0	APR/MAY/JUNE	123	58	29

GOALS AND ACTUAL NEW CLUBS CUMULATIVE



GOALS AND ACTUAL MEMBERS CUMULATIVE



DROPPED CLUBS: 8	68 CLUBS OF 121 ADDED 1 OR MORE NEW MEMBERS	<u>GENDER DISTRIBUTION</u> MALE 1,756 (55.87%) FEMALE 1,387 (44.13%)
<u>DROPPED MEMBERS</u> DECEASED 18 CLUB CANCELLED 47 OTHER 323 <hr/> TOTAL 388	CLICK HERE FOR CUMULATIVE MEMBERSHIP DATA	TOTAL FAMILY UNIT MEMBERS 541 FAMILY MEMBERS PAYING HALF DUES 281